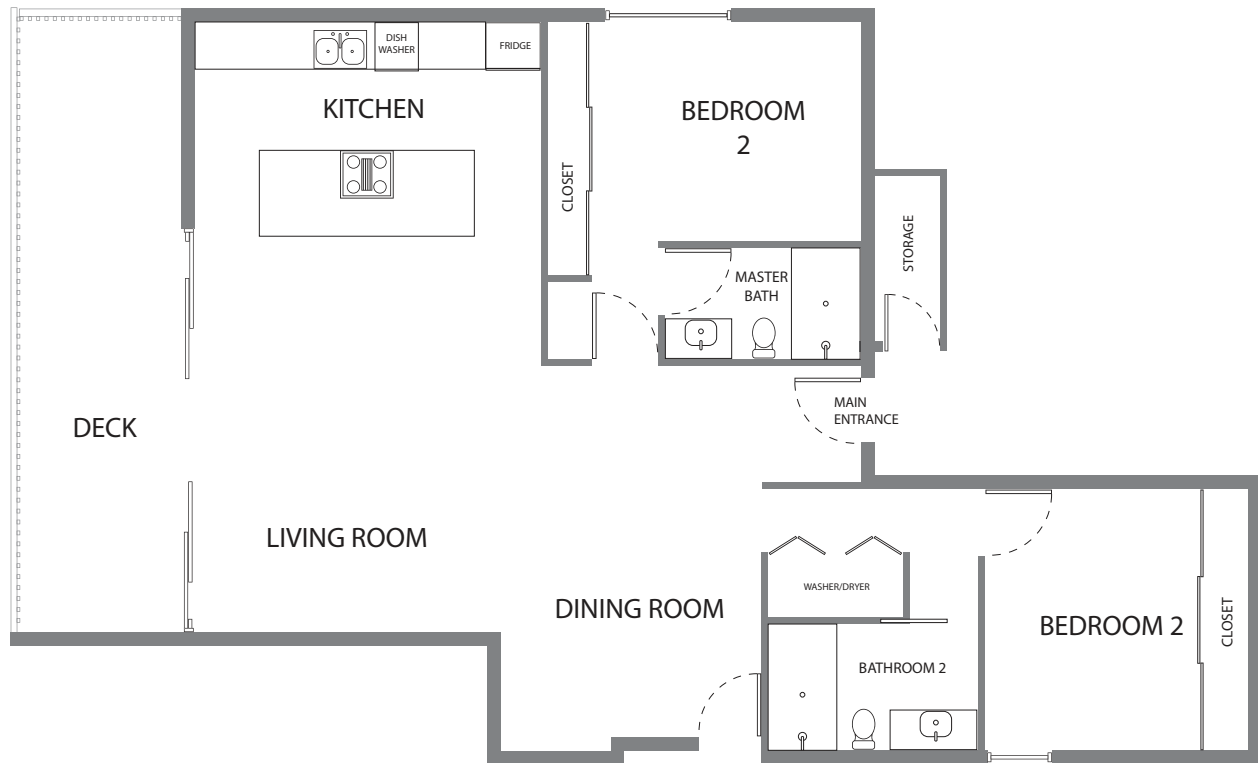


6IX_{AT} PARK

NORTH

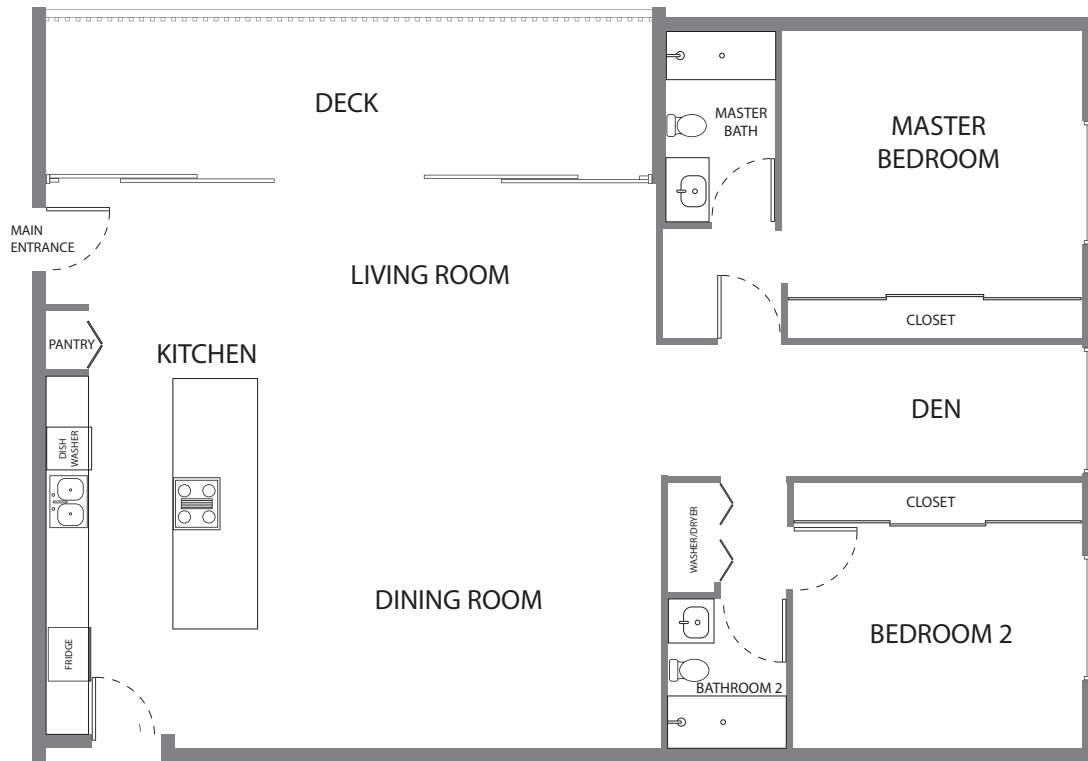
FLOORPLAN - UNIT 301



"Drawings and renderings are intended solely for illustrative purpose. The images depicted may not accurately represent the actual condition of a home as constructed and may contain options which are not standard or available on all homes. The specific features, floor plans, square footage, dimensions and design elements in a home may vary from home to home; and are subject to changes or substitutions without prior notice. Mayfair Communities reserves the rights to make changes to the floor plans, specifications, dimensions, designs and elevations and to substitute equipment, material, appliances and brand names with items of equal or similar value. Please refer to your sales representative and the actual home purchase and sale agreement for additional information, disclosures and disclaimers relating to the home and its features."

6IX_{AT} NORTH PARK

FLOORPLAN - UNIT 302



"Drawings and renderings are intended solely for illustrative purpose. The images depicted may not accurately represent the actual condition of a home as constructed and may contain options which are not standard or available on all homes. The specific features, floor plans, square footage, dimensions and design elements in a home may vary from home to home; and are subject to changes or substitutions without prior notice. Mayfair Communities reserves the rights to make changes to the floor plans, specifications, dimensions, designs and elevations and to substitute equipment, material, appliances and brand names with items of equal or similar value. Please refer to your sales representative and the actual home purchase and sale agreement for additional information, disclosures and disclaimers relating to the home and its features."

6IX_{AT} NORTH PARK

FLOORPLAN - UNIT 201



"Drawings and renderings are intended solely for illustrative purpose. The images depicted may not accurately represent the actual condition of a home as constructed and may contain options which are not standard or available on all homes. The specific features, floor plans, square footage, dimensions and design elements in a home may vary from home to home; and are subject to changes or substitutions without prior notice. Mayfair Communities reserves the rights to make changes to the floor plans, specifications, dimensions, designs and elevations and to substitute equipment, material, appliances and brand names with items of equal or similar value. Please refer to your sales representative and the actual home purchase and sale agreement for additional information, disclosures and disclaimers relating to the home and its features."

6IX_{AT} NORTH PARK

FLOORPLAN - UNIT 202

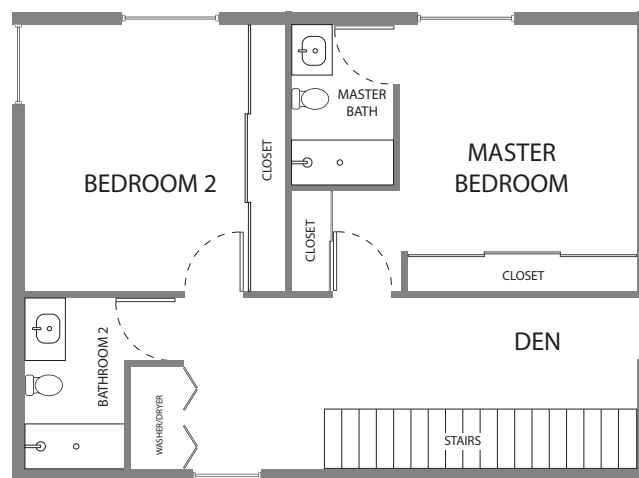
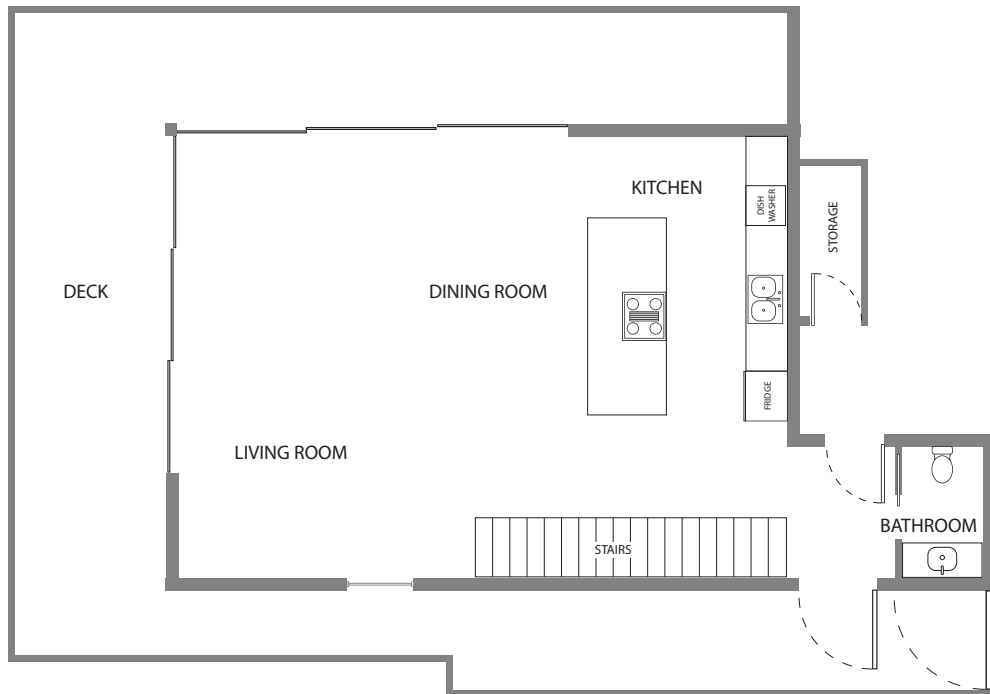


"Drawings and renderings are intended solely for illustrative purpose. The images depicted may not accurately represent the actual condition of a home as constructed and may contain options which are not standard or available on all homes. The specific features, floor plans, square footage, dimensions and design elements in a home may vary from home to home; and are subject to changes or substitutions without prior notice. Mayfair Communities reserves the rights to make changes to the floor plans, specifications, dimensions, designs and elevations and to substitute equipment, material, appliances and brand names with items of equal or similar value. Please refer to your sales representative and the actual home purchase and sale agreement for additional information, disclosures and disclaimers relating to the home and its features."

6IX_{AT} PARK

NORTH

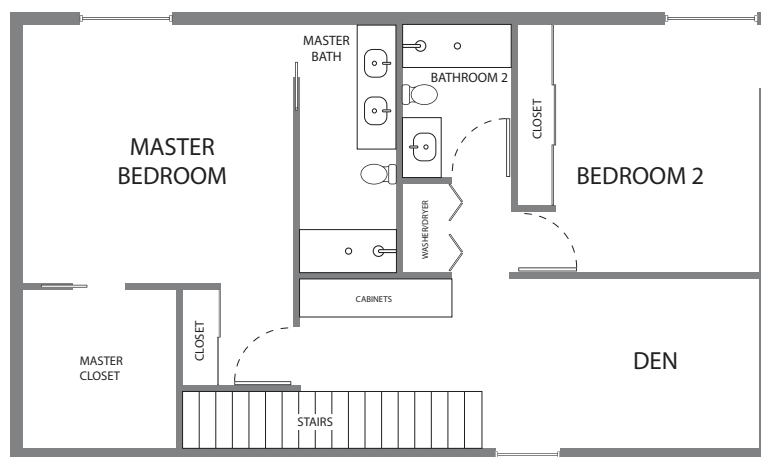
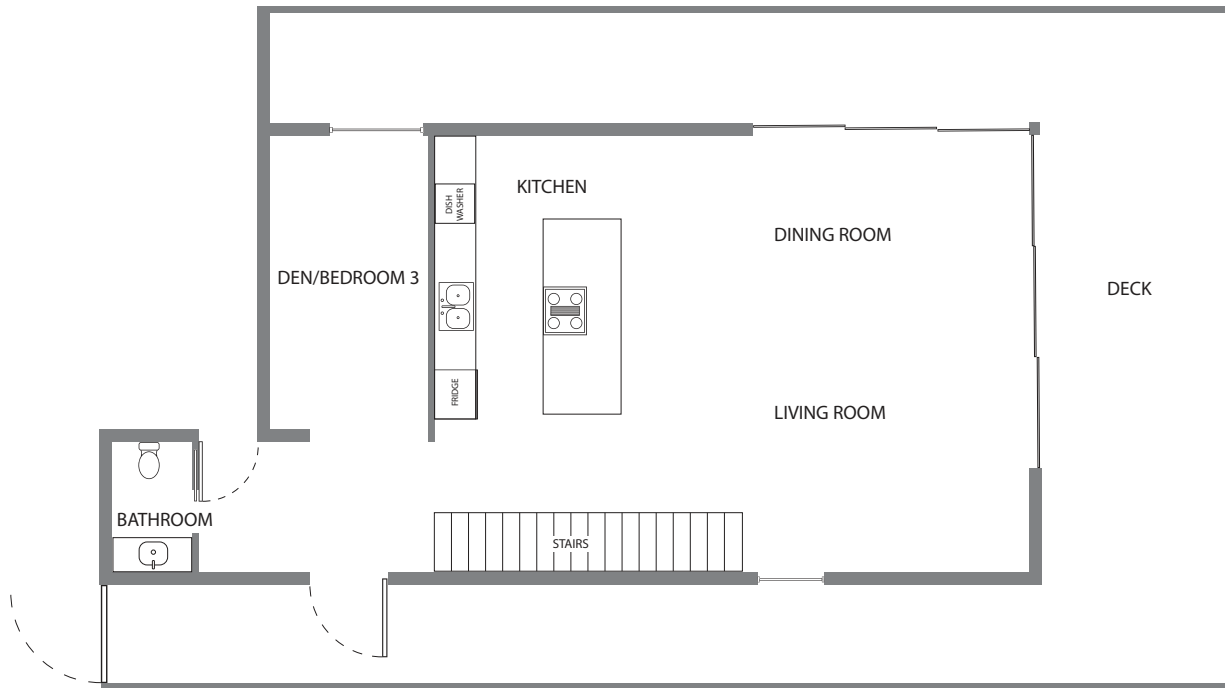
FLOORPLAN - UNIT 401



"Drawings and renderings are intended solely for illustrative purpose. The images depicted may not accurately represent the actual condition of a home as constructed and may contain options which are not standard or available on all homes. The specific features, floor plans, square footage, dimensions and design elements in a home may vary from home to home; and are subject to changes or substitutions without prior notice. Mayfair Communities reserves the rights to make changes to the floor plans, specifications, dimensions, designs and elevations and to substitute equipment, material, appliances and brand names with items of equal or similar value. Please refer to your sales representative and the actual home purchase and sale agreement for additional information, disclosures and disclaimers relating to the home and its features."

6IX_{AT} NORTH PARK

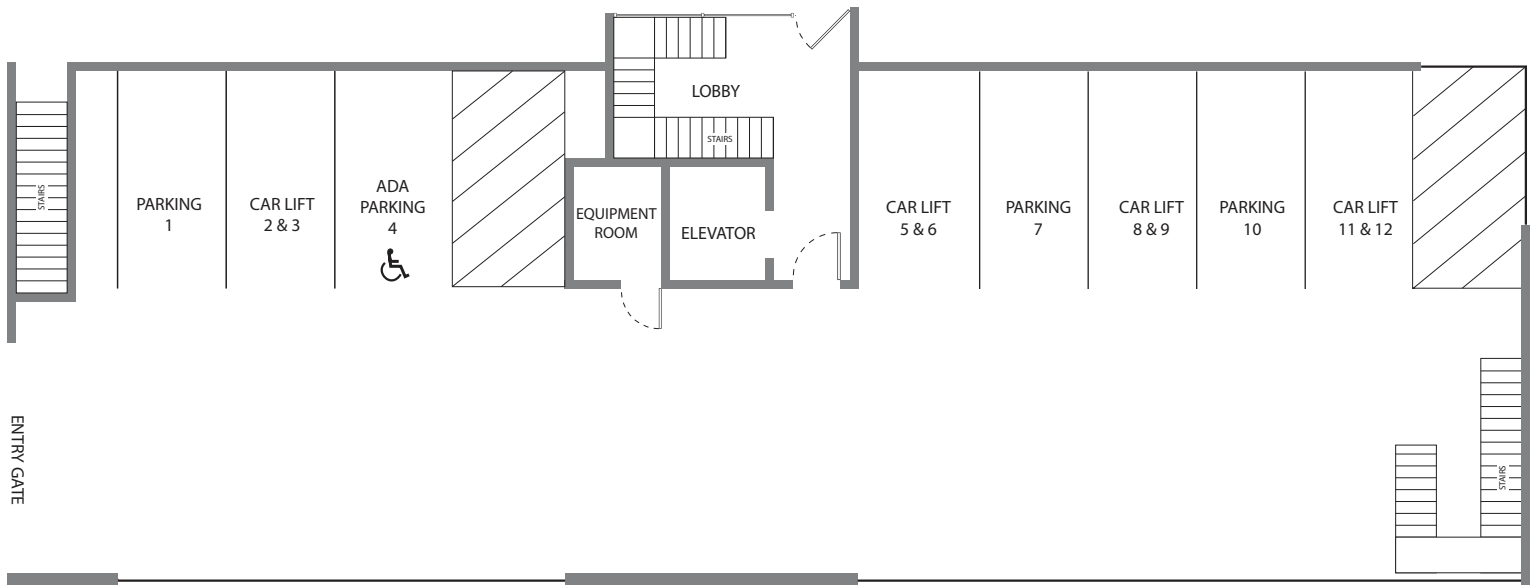
FLOORPLAN - UNIT 402



"Drawings and renderings are intended solely for illustrative purpose. The images depicted may not accurately represent the actual condition of a home as constructed and may contain options which are not standard or available on all homes. The specific features, floor plans, square footage, dimensions and design elements in a home may vary from home to home; and are subject to changes or substitutions without prior notice. Mayfair Communities reserves the rights to make changes to the floor plans, specifications, dimensions, designs and elevations and to substitute equipment, material, appliances and brand names with items of equal or similar value. Please refer to your sales representative and the actual home purchase and sale agreement for additional information, disclosures and disclaimers relating to the home and its features."

6IX_{AT} NORTH PARK

FLOORPLAN - GARAGE



"Drawings and renderings are intended solely for illustrative purpose. The images depicted may not accurately represent the actual condition of a home as constructed and may contain options which are not standard or available on all homes. The specific features, floor plans, square footage, dimensions and design elements in a home may vary from home to home; and are subject to changes or substitutions without prior notice. Mayfair Communities reserves the rights to make changes to the floor plans, specifications, dimensions, designs and elevations and to substitute equipment, material, appliances and brand names with items of equal or similar value. Please refer to your sales representative and the actual home purchase and sale agreement for additional information, disclosures and disclaimers relating to the home and its features."

FEATURES

EXTERIOR ARCHITECTURAL FEATURES

- Contemporary Architecture
- Upgraded Designer Windows
- Modern Lighting Fixtures
- Decorative Wrought Iron, Railings And Gates
- Expansive Decks
- Silver Metallic Painted Front Doors
- Piano Key Windows
- Professionally Designed Drought Resistant Landscaping
- Painted Rain Gutters And Downspouts

INTERIOR DETAILS

- 10' Ceiling Height
- Skylights *
- Contemporary Doors With Chrome Hardware
- Contemporary Style Soft Close European Style Cabinetry With Adjustable Shelves
- Beautiful Calacatta Laza Quartz Countertops
- Large Windows And Sliders
- Contemporary Baseboard

BATHROOMS

- Shower Wall Tile From Floor To Ceiling In Statuario porcelain
- Kohler "Wellworth" Commode
- Calacatta Laza Quartz Countertops
- Kohler "Vox" Rectangular Surface Mounted Sinks
- Delta "Modern" Faucet
- Self-close Cabinetry In Gregio Notte Horizontal Grain With Adjustable Shelving
- Pfister "Kelen" Adjustable Shower Fixture With Removable Showerhead
- Medicine Cabinet
- Recessed Tiled Soap Niche With Metal Banding
- Oversized Mirror Above Vanities
- Skylights *

MASTER BEDROOM

- Spacious Walk-in Closet*
- Shelf And Chrome Pole

KITCHENS

- Soft Self-close Cabinetry In Gregio Notte Horizontal Grain With Adjustable Shelving
- GE Stainless-steel Appliances:
- 36"ge "Profile" Five Burner Gas Cooktop With 18k Power Boiler
- GE "Profile" Microwave
- 30" Ge Wall Oven
- GE Dishwasher With Hidden Controls
- 36" Ge "Profile" Island Hood
- Blanco "Meridian" Professional Pullout Chrome Faucet
- Low Noise Garbage Disposal
- Under Cabinet Lighting
- Island With Calacatta Laza Quartz Countertop With Waterfall And Backsplash
- Mirabelle Brushed Stainless Steel Kitchen Sink

ADDITIONAL FEATURES

- Energy-efficient, Dual Glazed, Low-e, Vinyl Windows
- 5/8 Screwed In (Not Nailed) For A Better Finish And Appearance
- Cast-iron Waste Lines For Quiet Operation
- Weather Stripping On All Exterior Doors
- Fully Insulated Exterior Walls And Ceilings
- Split-system Heat Pump For Air Conditioning And Heating
- Tank-less Water Heaters With Circulating Pumps For Instant Hot Water
- Prewired For Security System
- Double Party Wall System With Air Gap For Sound Insulation

AMENITIES

- Private, Tiled Entry Lobby With Secure Intercom System
- Elevator
- Professionally Landscaped
- Car Lifts *
- Maintenance Free Living
- Large Private Party Decks
- Storage Unit *
- Two Parking Spaces For Each Unit *
- On Grade Parking In Secure Garage

* Not Available In All Units

"Drawings and renderings are intended solely for illustrative purpose. The images depicted may not accurately represent the actual condition of a home as constructed and may contain options which are not standard or available on all homes. The specific features, floor plans, square footage, dimensions and design elements in a home may vary from home to home; and are subject to changes or substitutions without prior notice. Mayfair Communities reserves the rights to make changes to the floor plans, specifications, dimensions, designs and elevations and to substitute equipment, material, appliances and brand names with items of equal or similar value. Please refer to your sales representative and the actual home purchase and sale agreement for additional information, disclosures and disclaimers relating to the home and its features."